



REMOTE STYLE SRG MASS FLOW METER

REMOTE STYLE THERMAL MASS FLOW METERS FOR GASES

Our high performance Thermal Mass Flow Meters are available in a more industrial Remote configuration. The Series SRG includes a more robust latched 9.3"x7.3" Fiberglass and Glass Windowed Remote Enclosure that can be mounted at least 2000 feet away from the sensor's measurement point. The 6-conductor cable separating the sensor probe (or flow body) from the electronics is lead-length compensated, and thus the user can change wire length without affecting the meter's accuracy or performance. In addition, the probe has an Explosion Proof Junction Box that does not require any electronics (all the electronics, as well as the meter display and menuing keypad, are in the Remote Enclosure). Thus, this easy-to-wire Junction Box is suitable for harsh environments.

Also featured in the SRG Series is the Touch Panel Menuing Keypad. The Remote Enclosure does not need to be lifted to activate the versatile Menuing system. Any of the four keys will sense your finger location on top of the exterior glass.

See below for other features and benefits of Sage Thermal Mass Flow Meters.

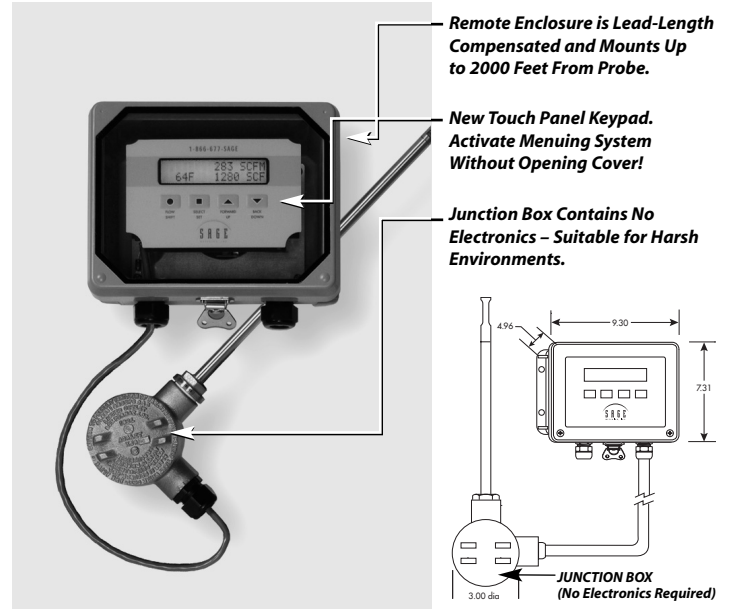
THERMAL MASS FLOW METERS

Sage Metering is your source for monitoring, measuring and controlling the gas mass flow in your industrial process. Our high performance, NIST traceable, thermal mass flow meters will help increase productivity, reduce energy costs, and maximize product yields. With over 80 years of combined experience in delivering quality in-line and insertion thermal mass flow meters for a wide variety of industrial needs, the Sage Metering management team is dedicated to providing you with the performance and customer support that you deserve.

Sage Thermal Mass Flow Meters are designed for high performance mass flow measurement of flow rate and consumption of gases such as natural gas, air, oxygen, propane and other gases and gas mixes. They are field rangeable and have a convenient user interface.

Sage Metering has distinguished itself by offering a higher standard – our mass flow meter output is unaffected by even large process temperature variations, and our digital electronics is impervious to external analog noise. Isolated 4-20 ma outputs for mass flow and/or temperature, relays, and a convenient RS232 and keypad user-interface, gives you the flexibility to integrate the functions of flow measurement with your specific needs.

See Sage Metering product brochure for additional information and product benefits or contact us at 866-677-7243 for application assistance.



HOW DOES THERMAL MASS FLOW MEASUREMENT BENEFIT YOU?

- Direct Mass Flow – No need for separate temperature or pressure transmitters
- High Accuracy and Repeatability – Precision measurement and optimal control of your process
- Rangeable over 100:1 Turndown (1000:1 with multiple calibrations) – Accommodates the extremes of your process with one instrument
- Low-End Sensitivity – Detects leaks, and measures flow, even on start-up
- Negligible Pressure Drop – Will not impede the flow nor waste energy
- No Moving Parts – Eliminates costly bearing replacements, and prevents undetected accuracy shifts
- Dirt Insensitive – Provides sustained performance

WHAT ARE THE BENEFITS THAT SAGE THERMAL MASS FLOW METERS OFFER YOU?

- Verify sensor cleanliness and validate calibration with self-check routine
- *Touch Screen Technology.* The cover does not need to be removed to access Menuing System
- *Lead-Length Compensation.* Remote electronics up to 2000 ft from probe
- Probe Junction Box requires no electronics. Suitable for harsh environments
- Available with up to four totally independent calibrations (four different gases, sensitivities, or configurations). Channels A–D selectable by keypad, laptop or external switch closure
- Powerful state-of-the-art microprocessor technology designed for high performance mass flow measurement, and field rangeability
- Proprietary sensor drive circuit provides enhanced signal stability and is unaffected by process temperature changes
- Menu driven user configurability, including full scale setting, units of measure, pipe area, channel selection, pulsed outputs of total, and diagnostics
- Easy to read 2-line back-lit flow rate/totalizer and temperature display. Also serves as dialog window for menu selection of user options
- RS232 PC interface and free Sage VIP software – easy to use
- Ease of installation, and convenient mounting hardware
- Flow conditioning built in to large flow meters (3/4" and up)