



Document # 110-0009-REV-A

3/9/2023

Paramount (401/402) VAC/VDC

Ethernet TCP/IP Quick Start Guide

Ethernet TCP/IP Quick Start Guide

A. Upon power up, COM light should be flashing

B. Open the following IP Address Discovery tool

<http://www.iccdesigns.com/downloads/ddt/exe/Device%20Discovery%20Tool.exe>

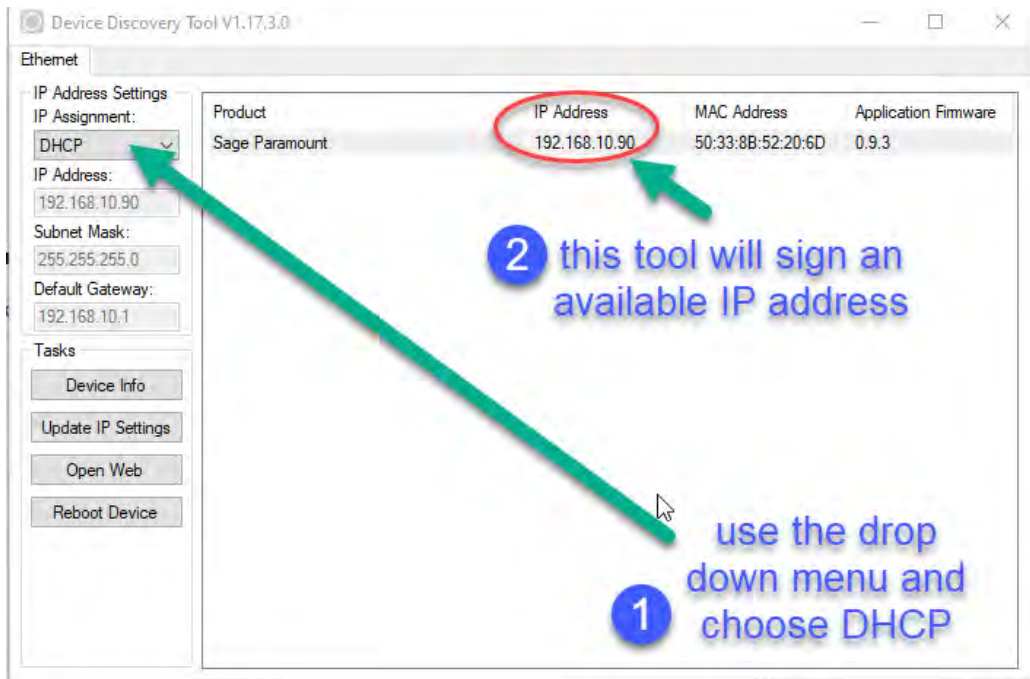
C. On the Discovery tool – Choose DHCP or Static IP address, refer to image ill a.

1. DHCP will choose the first available IP address
2. Static requires user to set IP address

D. To choose DHCP or to set a static IP address -

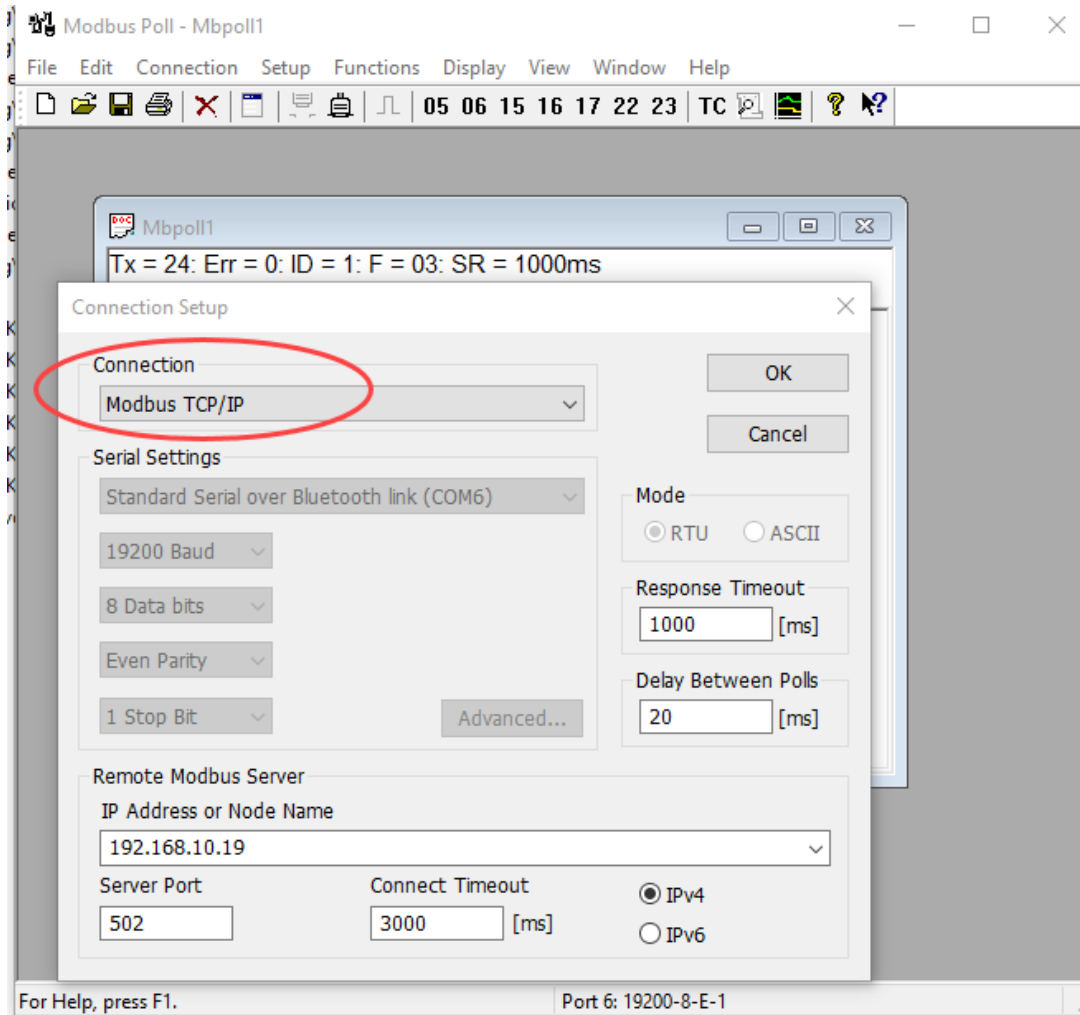
1. On Discovery tool – Open Web
2. Click Ethernet Parameters
3. Click Edit
4. Choose DHCP or STATIC for IP assignment
5. If DHCP is chosen, Click “Save parameter changes”
6. If STATIC is chosen → assign 192.168.10.XXX (next to Address)
7. Click “Save parameter changes”

Department Engineering, Production		Title/Subject Ethernet TCP/IP Quick Start Guide		Number 110-0009	
VP Operations Gary Russell		Date 3/9/2023	Revision A	Page 1	



E. When using Modbus Poll → Connection → Choose Modbus TCP/IP
(Non-Ethernet meters are always “Serial Port”) → see image below

Department Engineering, Production		Title/Subject Ethernet TCP/IP Quick Start Guide		Number 110-0009	
VP Operations Gary Russell		Date 3/9/2023		Revision A	Page 2



F. Input IP Address → 192.168.10.XXX

G. Server Port is always 502

H. Click 'OK'

Department Engineering, Production	Title/Subject Ethernet TCP/IP Quick Start Guide	Number 110-0009
VP Operations Gary Russell	Date 3/9/2023	Revision A
		Page 3



Sage Metering Inc.
 8 Harris Ct. Building D
 Monterey CA. 93940
 831-242-2030
 866-677-SAGE (7243)

110-0009-REV-A – 3/9/2023

Ethernet TCP/IP Object Map

Register	Description	ETHERNET OBJECT BASE 0	ETHERNET OBJECT BASE 1
Serial Number		0000	0001
Totalizer Value		0002	0003
K - factor		0004	0005
Filter		0006	0007
Low Flow Cutoff		0008	0009
Full Scale Flow		0010	0011
Flow Rate		0012	0013
TEMP °F		0014	0015
RTD mWatts		0016	0017

Department Engineering, Production		Title/Subject Ethernet TCP/IP Quick Start Guide		Number 110-0009	
VP Operations Gary Russell		Date 3/9/2023	Revision A	Page 4	